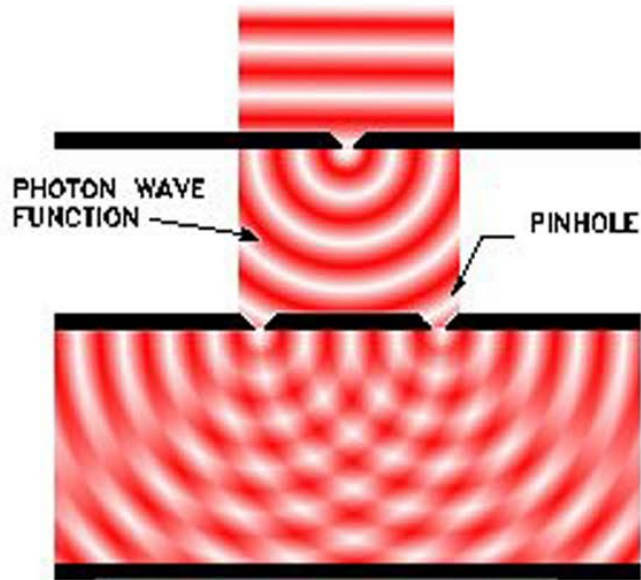


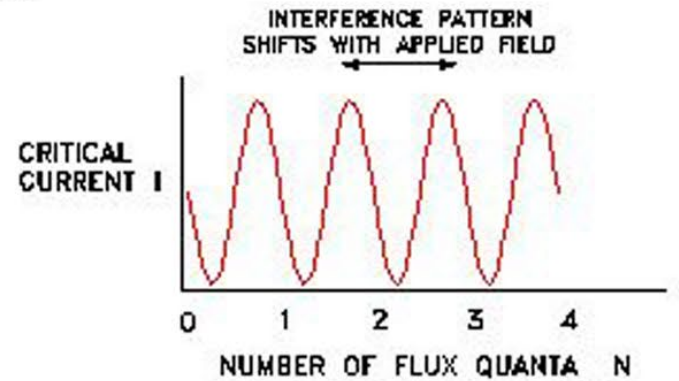
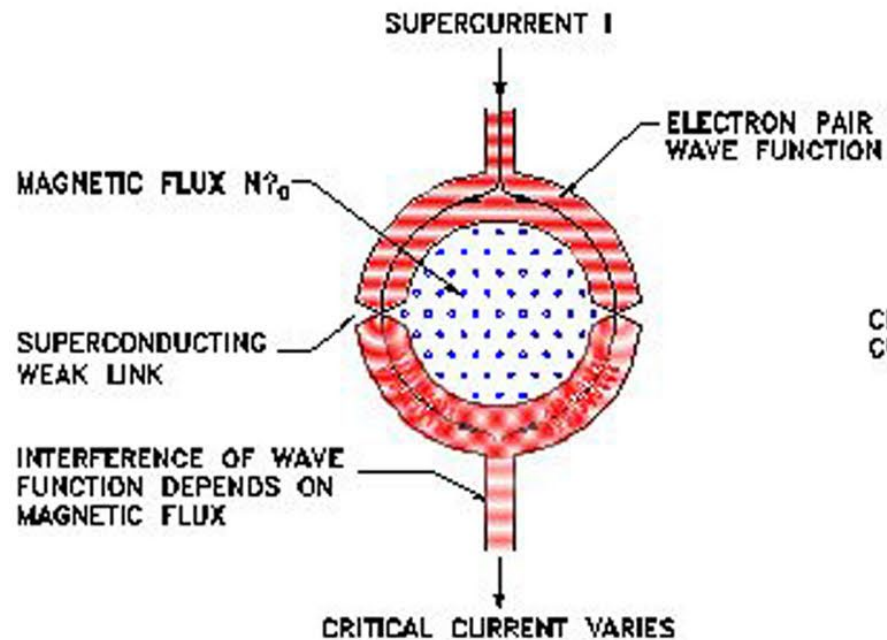
Superconducting Quantum Interference Device

OPTICAL INTERFEROMETER



INTERFERENCE DEPENDS ON PATH DIFFERENCE
BRIGHTNESS PATTERN IS FIXED

SQUID INTERFEROMETER



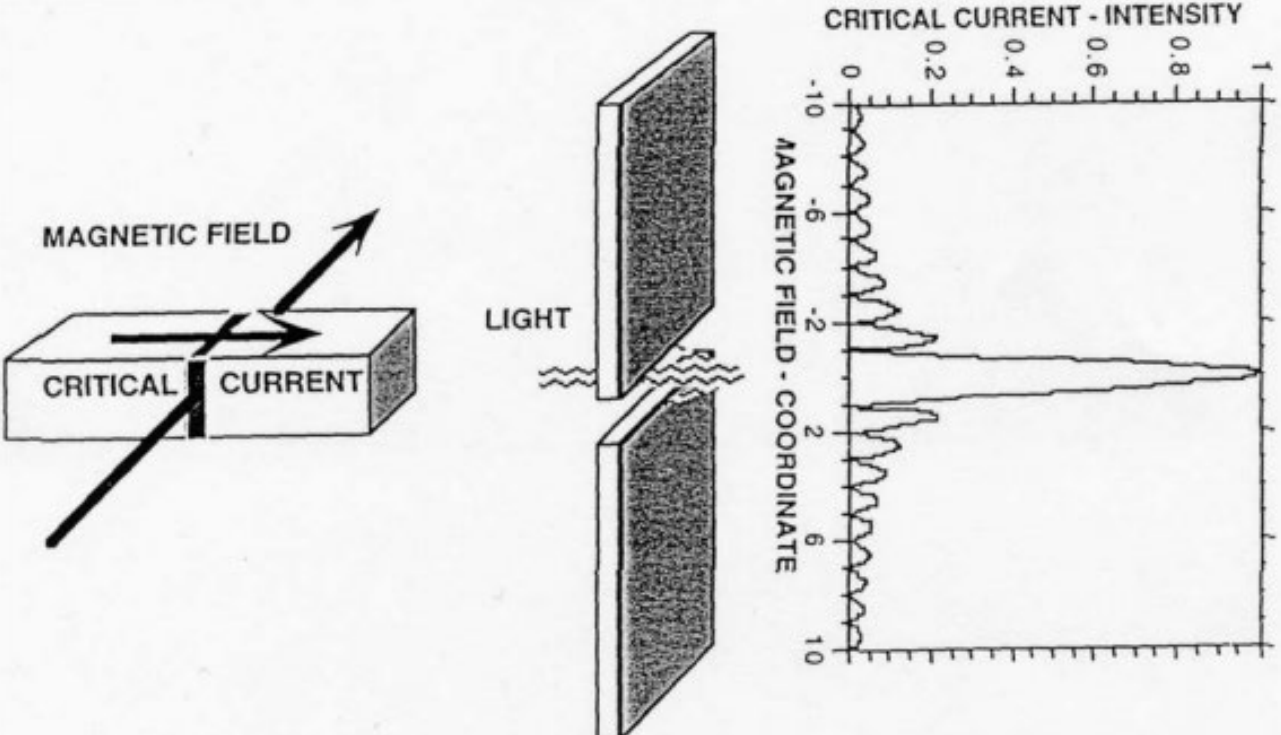


Figure 5. Analogy of a Josephson junction in a magnetic field and light diffracted in a single slit.

<http://fy.chalmers.se/~delsing/LowTemp/Labbar/SQUIDlab-rev3.pdf>

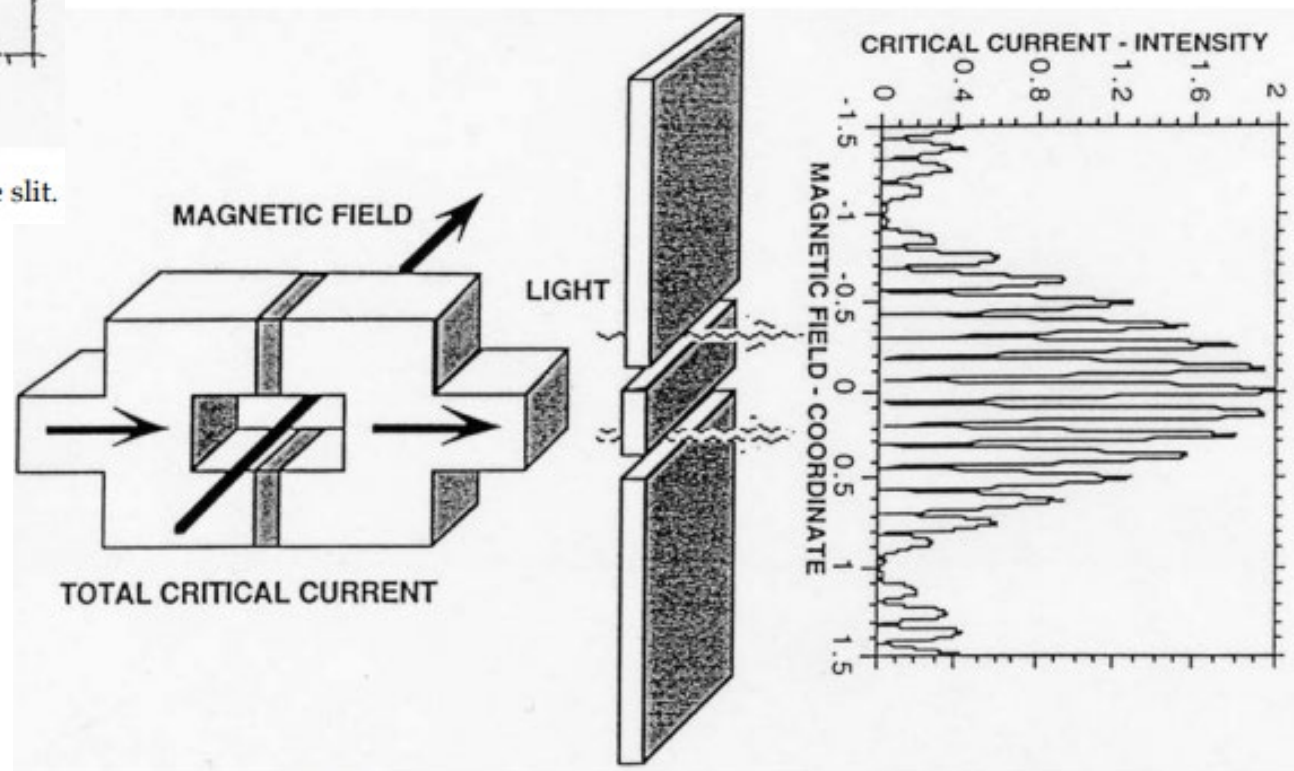


Figure 7. Analogy of a SQUID in a magnetic field and light interfering through two slits.